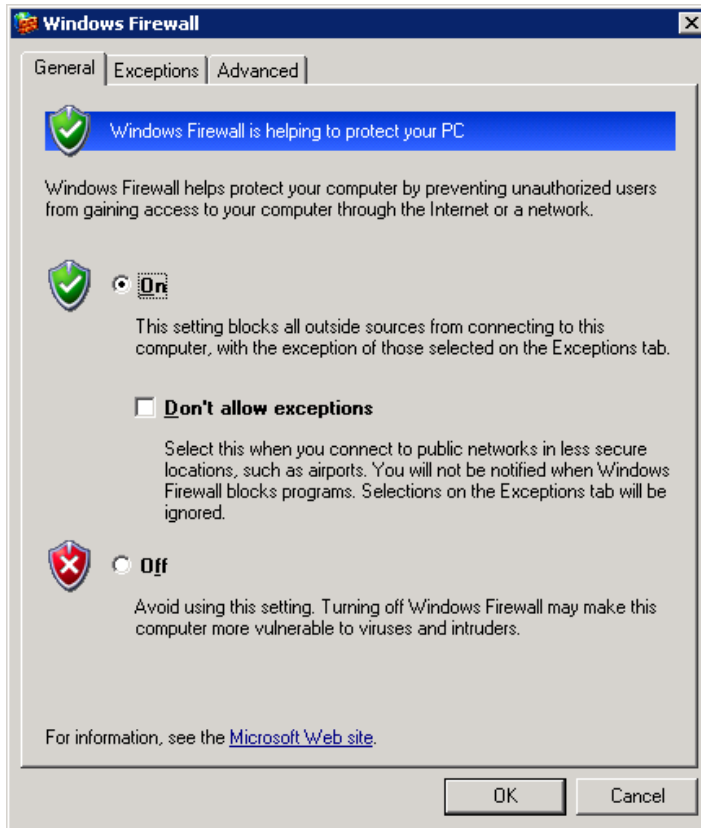
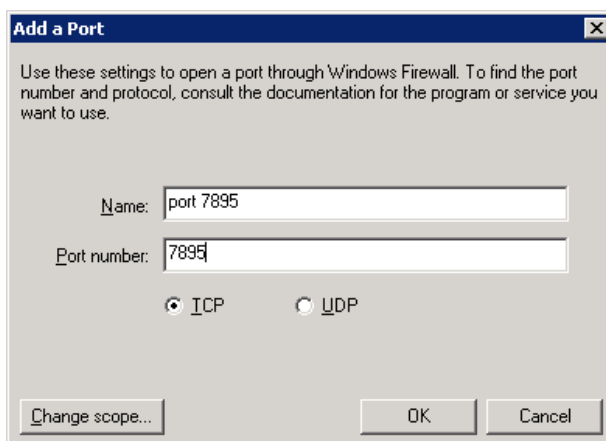


Opening a port on the Microsoft Firewall

Go to start, control panel, and click on windows firewall. This box should appear:



Click on exceptions. Then click on add port. In here you will add a name for your port, and the port number.

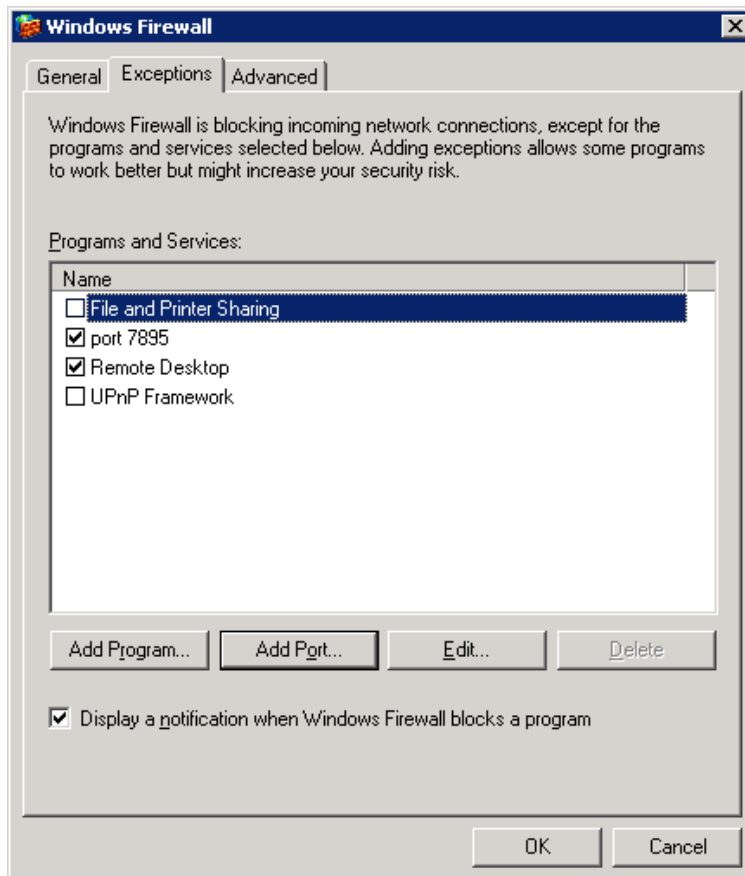


In this example, we added port 7895. The name can be anything but the port number must be exact.

TCP is the protocol to use unless UDP is specified.

Click ok.

Make sure your new port is ticked in the next screen



If you need to add any more ports, repeat the process. If not, click ok and you're done.